

# CRYSTAL LOVE

How to Attract Love

by

Elizabeth Harper



❖ Love Crystals

❖ How to Create A Love Grid

❖ How to Create The Essence of Love in a  
Love Potion

❖ How to Create a Soulmate Vortex

❖ About me

# Love Crystals

---



I have always loved crystals, they offer the energy of the earth and each one has a certain magic. They come in all shapes and sizes, some natural, others manmade. The shape and color can impact the way a crystal can be used. I like to imagine myself as a shape to know how to use it, but then that's me!!

---

The traditional stone of love is Rose Quartz. The large stone and the hearts in the image above are made from Rose Quartz. The chunk is a natural piece while the hearts have been manmade from natural crystal. Pink is the color of unconditional love so any pink stone will be filled with the vibration of love. The small pink chunks are morganite, a very gentle stone of love, and the crystal points are clear quartz, great amplifiers of energy.



# HOW TO MAKE A LOVE GRID

---

MY WAY!





Everyone has their own way of doing things and I am no different. So, if there is anything here that feels wrong to you, don't do it! Find out what your "right way of doing it" is and then go with that. Grids are essentially power maps of energy that are set up to connect and charge points. So your map might use a shape from sacred geometry, or a symbol that resonates with you like the infinity sign or a heart, or they can be set up to connect corners of a room or area.

There are an infinite number of ways you can create your grid. Many people use the flower of life - a 6-pointed Grid - and a good number for our purpose as it links with Aphrodite/Venus the Goddess of Love. So we're going to use 6 crystals around a large central crystal.

To the right you'll see a crystal grid for love. In the center is the chunk of rose quartz, then either side are the rose quartz hearts pointing at the chunk - there is the sense of energy coming in with the points facing the center, when the points face outward the energy is moving out. So you can point your crystals outward if your intention is to send energy out.

I've placed the morganite pieces next to the hearts to boost love and the clear quartz points are pointing at the center. This is a basic grid. Before we get into the "hows" let's just look at another set up.

In this grid I'm using the same crystals, but I've set them out separately so now they make 6 segments. I set up this grid first, then I stood back and let the energy infuse my energy field. I looked at it and asked if this was the right set up for me.

I didn't feel much energy coming from this formation, so I set up the grid again like the previous image, stood back again to feel it and then felt a waft of energy hit me, so I knew this was the right way for me at this moment.



I say "at this moment" because I wouldn't get too stuck on one way of doing things. Your energy changes, the energy of the crystals might change, the time and space you are in changes, so give yourself permission to go with the flow and change the way you do things.

As with any crystal work before you set out to make your grid each crystal needs to be cleansed. I like to use running water and intention to cleanse my crystals. Not all crystal chemistry is suitable to place in running water, but the quartz and morganite are.



Use a clean cloth to place your grid on. You also want to place your grid somewhere it won't be disturbed preferably in a place that is clean and clear of clutter. Think of your grid as an expression of your energy. You want it to look and feel good and you want your message to be loud and clear. If there is other stuff around it then the message could become garbled. So treat your grid with love and create it in place that is filled with love.

Once you have chosen your spot, added a cloth if one feels good, natural fibers are best - maybe a nice pink cloth or you can go without a cloth!



Once you've cleansed your crystals you can either hold them as a group or hold them one by one to infuse them with the energy of your intention.

#### **RULE OF THUMB!**

To supersize your love vibration, hold the crystals in your "programming" hand - this is your dominant hand. Traditionally your dominant hand is the one you write with, but of course I don't see it this way. So let's find out which of your hands is your dominant hand. Place your hands together like the image to the right, the thumb on top is your dominant hand. My left hand thumb is on top and I am right handed. So for programming and healing I use my left hand. I call this exercise my "rule of thumb!"





## PROGRAMMING CRYSTALS

I like to program my smaller crystals together, set up my grid, and then sit for a while with the larger central one. I like to have a conversation with it to connect so that it truly reflects my heart. I think of the grid like a wheel and the central crystal is the hub. It holds everything together, so my relationship with this one is at the core of how well my grid will work for me.

Once I've made my connection I ask it if it is ready to go into the grid. If it says yes, great, I can then place it at the heart. If it says no, then I need to find out what else I have to do. If you're connected then you can ask the crystal and you will receive the answer in one go, but this doesn't work for everyone.

---

So you can ask it a series of questions, things you might feel it needs such as - do I need to hold you for longer, do you need to be cleansed again, does the grid need to be set up differently, etc, and then go with what feels right.

If this doesn't work for you try using a pendulum - check out my video [HOW TO USE YOUR BODY AS A PENDULUM](#)

When it's time to place it at the heart, position it in a way that feels right. For the most part grids are created with everything in balance, so again imagine a wheel. If one of your crystals is outside the lines of the wheel then the grid is potentially out of balance.



## CHARGING YOUR GRID

Some grids like to be set up with a charging crystal. This means that you would have an additional crystal point larger than the small crystals in your grid but not necessarily larger than your central crystal. The charging crystal then charges each part of your grid. So it's like you're turning on a switch in each crystal as you follow the grid pattern awakening the connections between each piece.

If you choose to do this you'll need to cleanse and then program your charging crystal to do this work. Then begin at the core crystal and imagine you're drawing a pie chart.

---

Draw an imaginary line from the core to your first crystal - lets draw a line to the heart crystal on the bottom right. Then draw from the heart to the morganite crystal on the left (we're going clockwise to draw energy in).

Now go back to the center. You've just drawn a piece of pie. Next retrace your line back to the morganite crystal and then up to the quartz crystal point on the left and then back to the center.

That's your second piece. Continue charging your grid in the same way until you complete the circuit. Your last charging line will go from the rose quartz heart back to the central crystal.



### ADDING AFFIRMATIONS & INTENTIONS

You can place a photo or card under your central crystal with your intention and affirmations written on it to add to the energy of your grid. I made a heart shape of pink paper - pink for love - and then wrote three affirmations to empower the energy of my grid intention. Three is the number of Jupiter the planet of abundance. You can also use pink pen to write your intentions if pink paper isn't available.

---

I signed my card, it felt right to do so and by adding my name to the vibration of my crystal grid it feels like I am sealing the deal! The heart shape is a powerful symbol of love. If you were creating a money grid you could write your affirmations on a check or create a coin then write in gold or green, both colors of manifestation.





## GRID MAINTENANCE

So now I have my grid set up, what next? Leave the grid in place for at least 24 hours. Some people place their grids in direct sunlight or moonlight. I have my grid so it's near a window but it's not getting direct sunlight. This feels good to me. It's a good idea to utilize the positions of the heavenly bodies, so make your grid when the moon is waxing - from new to full - this can enhance it's impact.

Re-charge your grid every 24 hours. You can do this by just sitting with it, meditating with it, placing your hands over the grid like you are warming them on a fire just to connect, or use your charging crystal to trace the pies.

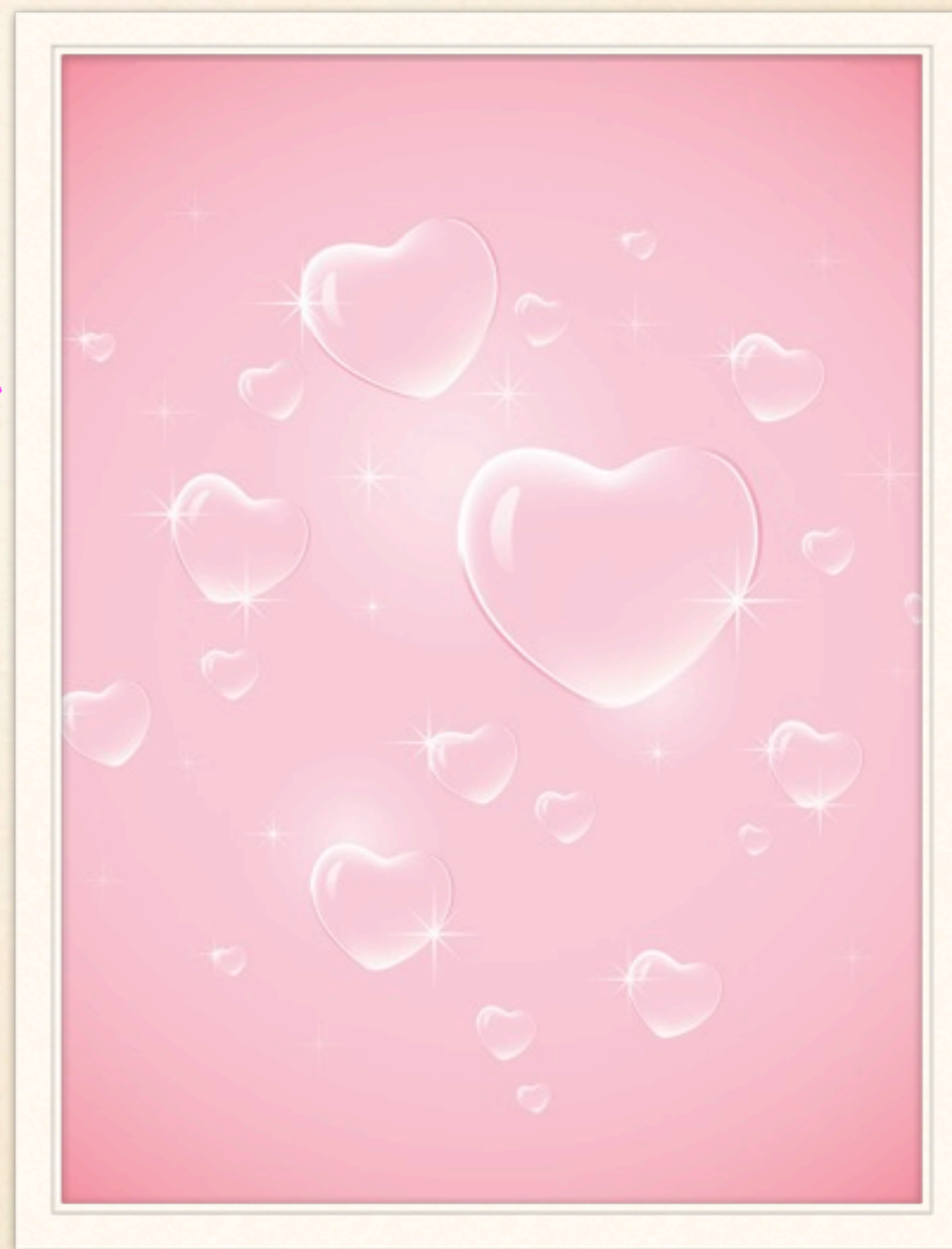
I asked my guides how long a love grid should be set up. The answer came back as indefinitely provided the energy of the grid is cared for and the crystals remain clean. As you'll be tuning into your grid on a daily basis you will know when it needs to be cleansed and re-energized.

One final thing here, remember to thank your crystals and the energy of the grid. Crystals love to be thanked!

# THE ESSENCE OF LOVE IN A LOVE POTION

---

A SUPER EASY GEM ESSENCE  
RECIPE!



A gem essence is made using a specific chosen crystal, a container of water, and a crystal grid - this is how I do it. The first batch of your gem essence is what I call your Mother Lode. From then on the essence is diluted down using drops from your Mother Lode meaning your initial batch can last a long time. For our Essence we're just sticking with the Mother Lode.

Set up your crystals just like you did for your crystal grid, but instead of putting the core crystal into the center by itself you'll be putting it into a glass of spring water. I placed my glass on top of the heart card with my affirmations just for a double whammy! You can place something on top so the water stays clean and fresh.

---

My guides tell me to leave the Love Potion crystals in place for 6 hours - you know why don't you! When the 6 hours are up take the crystal out of the water and strain the essence through a coffee filter to catch any tiny fragments that may have broken off from your crystal.

Add gem essence to your bath, dab it on a your heart or other points on your body, sprinkle your pillow, a chair, spritz a room, or you can simply drink it - best to take small sips over the course of the day. Make a new batch daily, try making it at different times of the day, try charging the crystals with different love intentions, changing the grid set up, etc. See how it affects the energy of the water for you.



# SOULMATE VORTEX

---

A MESSAGE FROM MY GUIDES



A soulmate is someone who loves you unconditionally and has agreed to help you to open your heart, be love, and embrace love wholeheartedly. A soulmate is not someone who completes you. You are not lost without your soulmate, soulmates are all around you on earth as humans and animals, in spirit as your loved ones and guides. When you truly understand energy then you will also understand that everything and everyone is your soulmate, because we are all connected, we are one! There is no separation between you and all of your soulmates.

---

So to set up a vortex to attract your soulmate your intention isn't on one person, it is on the ONE as a whole, as everything. The vortex is the energy of love. When you sit in the vortex your focus is on being love and how wonderful you feel in this energy. This is what attracts your soulmates to you. The vortex energy creates a sound, so if you imagine the sound of love it is that sound that draws to you all of your soulmates. It is not the image of a soulmate or the desire for a soulmate, it is the energy of being the soulmate - this is the Law of Resonance.





# CREATING YOUR SOULMATE VORTEX



- ❖ Sit in a place that is sacred to you, makes you feel good, is clutter free and free from interruption
- ❖ Close your eyes, visualize white light cleansing the space, then pink light bringing love in like a bubble, and finally golden light as a clockwise spiral coming from the heavens and spinning through the many dimensions of you. Allow your energy to expand and become one with the spiral, the bubble, and the cleansing white light.
- ❖ Now let your heart expand and imagine you are feeling the whole world in your heart - you are essentially becoming the center of the universe.
- ❖ Make an intention to be the energy of love, all life is linked in your heart, you are the center of life. Expand that energy and let your energy field vibrate with love, open your heart to the wonderful feeling of being one with everything.
- ❖ Call in your soulmates in energy form. You can imagine they are sparkles adding to the golden light. Feel the happiness as you greet old friends, remember this energy in your heart as if you're putting their phone number into the memory of your phone, so you can call them up any time.

- ❖ If it feels good then you are truly in the vortex, if it feels scary then let the feeling go and just come back into the energy of love.
- ❖ Stay in the vortex until you feel complete. When this happens it is time to return. Let all thoughts go except for the white light. Place one hand over your heart and feel the presence of the soulmate vortex in your heart. Thank the energy. When you are ready, take a deep breath in, open your eyes and as you breath out relax your hands.
- ❖ Let your eyes rest on something near to you and say thank you to it for being in your life and for being witness to the soulmate vortex you just created. Close your eyes.
- ❖ Take a deep breath, open your eyes and again rest your eyes on something near to you, say thank you to it for being in your life and for being witness to your creation. Close your eyes
- ❖ Take a deep breath and when you open your eyes imagine the soulmate who has answered your call is standing before you in energy form as a golden light. Say thank you to this being for being in your life and for answering the call. Place your hand on your heart, close your eyes.
- ❖ Breath in the golden light that is your soulmate into your heart, say thank you.
- ❖ Your soulmate vortex is now complete.



I hope you enjoyed my gift to you. Do you want MORE love in your life?

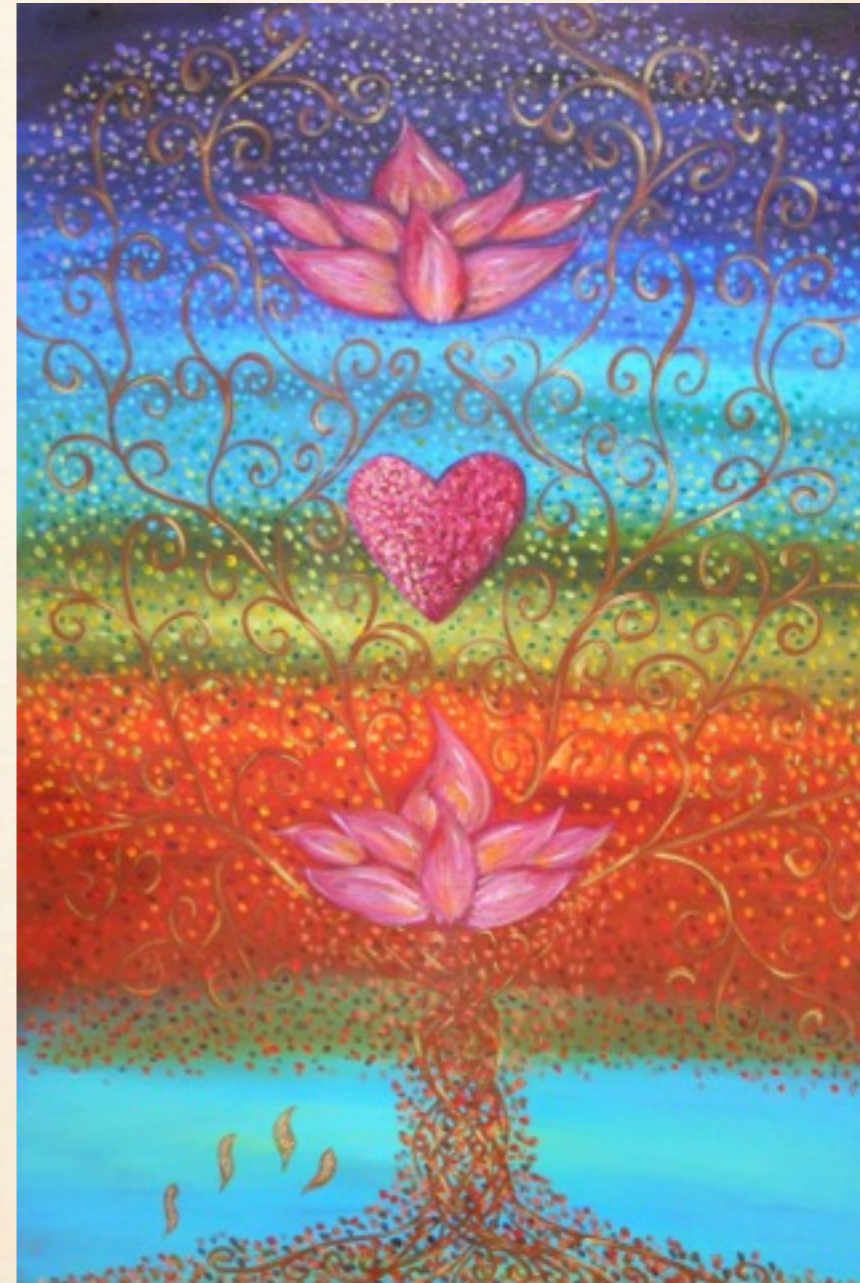
Everything I create is SEALED WITH LOVE. You can find all kinds of jewelry, crowns, silks and silk products, art, books and meditations such as the 108 Affirmations to Attract Love & Soulmates.

Find a little LOVE in my shop, go on, take a peek! I've shared some of my coloriscious goodies with you here.

# MY COLORFULL GIFTS

I handcraft inspirational & healing gifts using silks, and sparkly gemstones. I love the chakras, so you'll find artwork, silks and jewelry to nurture your inner rainbow.

GO SHOPPING!



# LOVE HEARTS

Pop a wish into the back of your gemstone encrusted Love Heart. Affirmations adorn the sides infusing this art piece with positive vibes and manifestation powers.

GO SHOPPING



# CROWNS & PENDULUMS

Every Goddess needs a Goddess crown and for those indecisive moments, a pendulum made with sparkly Swarovski crystals powered by a 500-Million year old Herkimer Diamond will do your bidding.

GO SHOPPING!



★ Goddess Saraswati Crown ♡  
Sanskrit name meaning essence of self  
Pearls for wisdom, knowledge, understanding  
Swarovski rainbow crystals for clarity, insight & wholeness



Goddess Venus Empowerment Crown  
Amazonite, Chrysoprase, Chrome Diopside  
Seraphinite, Peridot, Clear Quartz Point  
Swarovski Crystals  
Courage, Love, Soul Mates

I live in the country with my husband Win, in a house situated on a sacred hill overlooking upstate New York's Canandaigua Lake. I was fortunate that my mother, also a psychic and one of the pioneers of yoga in Britain during its advent, understood and nurtured my sensitivity to energy. I was exposed from an early age to spiritual, alternative, and metaphysical worlds. On my eleventh birthday I received my first deck of Tarot cards and for my twelfth I was given a crystal ball. This set the tone for my future career as a psychic medium and color seer.

---

My ability to see auras and interpret their energy led to training in various color related modalities and over the years I have pursued further education in a kaleidoscope of psychic, healing, and intuitive arts. My approach is colorisciously playful. I embrace all aspects of the metaphysical with joy, humor, and profound respect.

Love & Blessings





You can find out more about Elizabeth's work  
on her website

<http://www.SealedWithLove.com>

and store

<http://store.sealedwithlove.com>